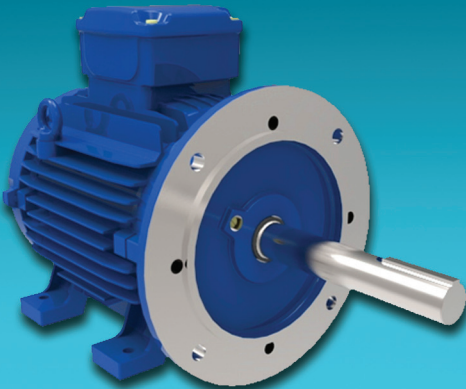
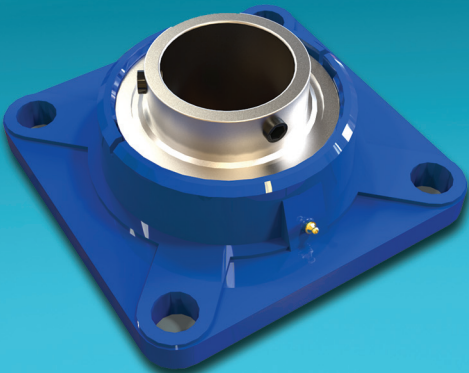
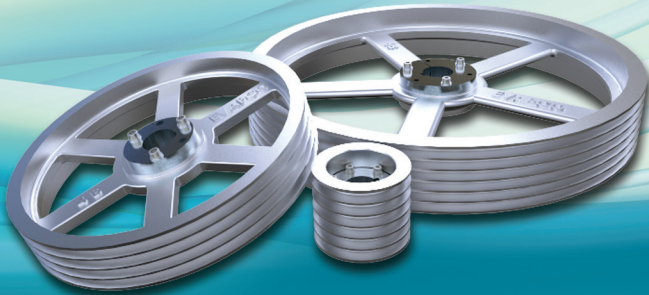
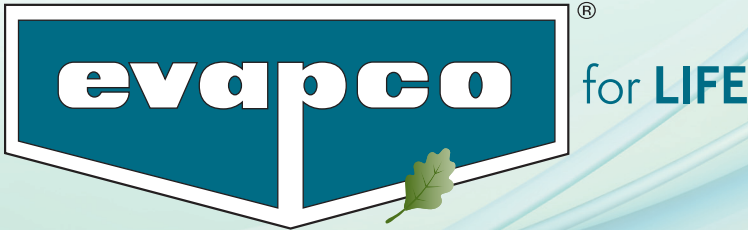


EVAPORATIVE EQUIPMENT SPARE PARTS



Mr. GoodTower®



Mr. GoodTower is the spare parts and service division of Evapco specializing in the service and repair of all makes and models of evaporative cooling equipment. Experts at each Mr. GoodTower Service Centre are capable of diagnosing issues with equipment that may result in excess water and energy consumption and may unnecessarily increase equipment operating cost.



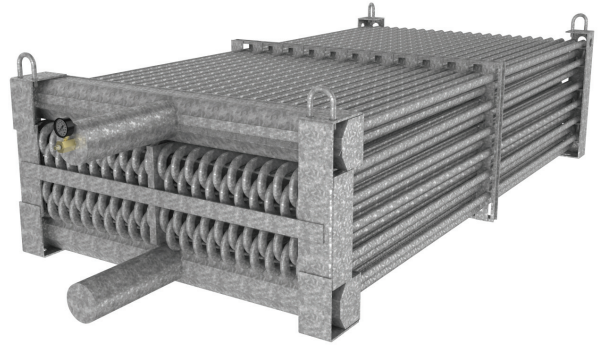
Contact your local Mr. GoodTower Service Centre for a free equipment inspection and recommendations to keep equipment operating as designed.



Mr. GoodTower Service Centers warehouse a large inventory of critical spare parts for all makes and models of equipment.

Visit www.mrgoodtower.com.au for service center locations and contact details.

Steel and Stainless Steel Coils



- Elliptical tube design
- Custom designs available
- Independently certified to AS1210-2010

EVAPCO's Thermal Pak II coil is the result of hundreds of hours of research and development by EVAPCO's team of product development engineers. Coils are manufactured from high quality Galvanised steel or stainless steel in house at EVAPCO coil making facilities around the globe.

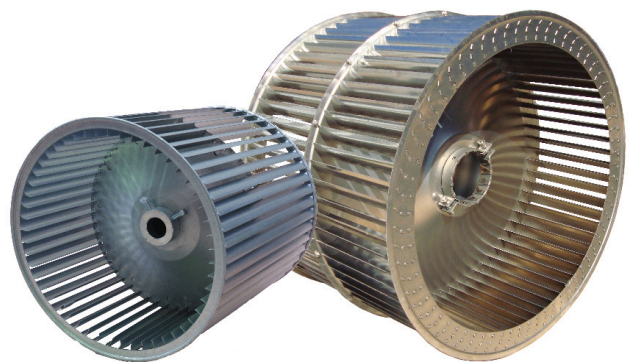
Axial Fans



- Aluminum or FRP construction
- Maintain thermal performance
- Diameters from 500mm to 6000mm

Mr. GoodTower Australia maintain a large inventory of metric and imperial fan diameter and blade combinations. Standard, Low Sound and Super Low Sound fans are available as direct replacement or custom selection by our engineering team.

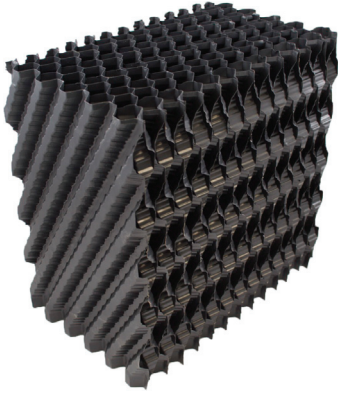
Centrifugal Fans



- Galvanised and stainless steel fabrication
- Maintain thermal performance
- Diameters from 15" to 30"

EVAPCO centrifugal fan wheels are designed and manufactured for evaporative cooling equipment applications. Wheels ship with heavy duty hardware and are backed by a two year parts warranty. Custom sizes can be manufactured on request.

EVAPAK E1200 Counterflow Fill



- Factory installed in EVAPCO equipment
- Highest efficiency EVAPCO fill

Designed for maximum cooling efficiency in clean water HVAC applications. Block sizes up to 8' in length are available.

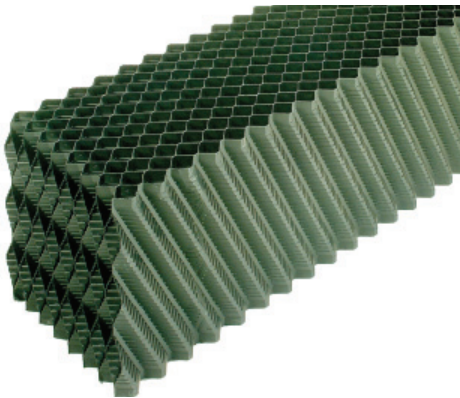
EDE-001 Drift Eliminators



- Certified drift loss rating of 0.001% as per AS3666
- Available in standard and high temp PVC

EDE-001 drift eliminators are constructed from lightweight corrosion resistant PVC material compliant to CTI standard 136. Sizes available up to 9' in length.

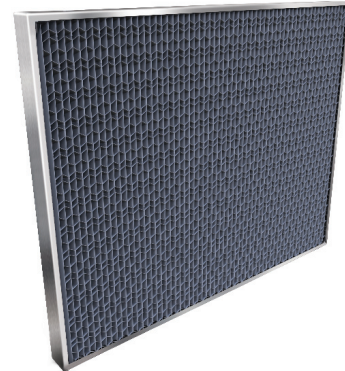
WIDE-PAK E1900 Counterflow Fill



- Premium efficiency low clog design
- Chemically bonded for superior strength

Suitable for dirty water HVAC and industrial applications. Block sizes up to 8' in length are available.

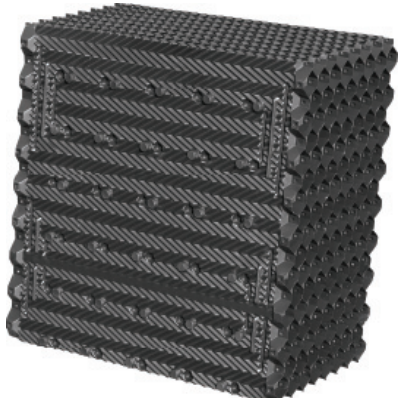
WST Inlet Louvers



- Eliminates sunlight exposure to basin
- Eliminates water splashout

WST inlet louvers incorporate design enhancements that eliminate "splash-out" while maximising airflow. Available with or without support frame.

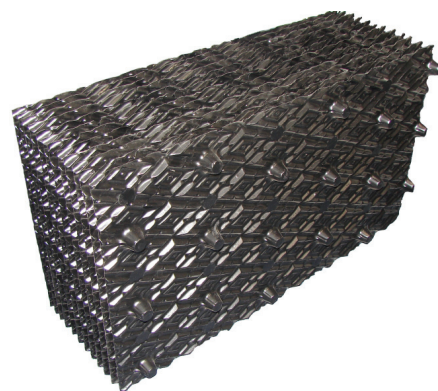
EVAPAK Crossflow Fill



- Replacement for all brands of crossflow equipment
- Easy to maintain bonded block system

Direct replacement for hanging sheet designs. Easy to handle and maintain bonded blocks.

EVX1600 CrossFlow Fill



- Versatile hanging sheet system
- Easy to handle and maintain

Designed for crossflow cooling tower applications. Available in full, half and quarter sheet configuration.

ZM and ZMII Nozzles



- Low clog design
- Zero maintenance required

ZM nozzles feature no moving parts meaning routine maintenance, emergency nozzle repairs and unscheduled downtime are eliminated.

EV Nozzles and Inserts



- Interchangeable inserts
- Heavy duty PVC material

EV series nozzles are a low clog counterflow nozzle used in Aqua-Cool and EVAPCO MSS Series equipment. Nozzles feature orifice inserts which regulate spray pattern at desired flow rate.

EVXC Crossflow Nozzles



- Crown cover prevents clogging
- Anti vortex design for better spray pattern

EVXC nozzles are designed as an upgrade to crossflow cooling tower nozzles in non-EVAPCO equipment. Nozzles feature a crown cover which prevents clogging, a common problem with non-EVAPCO designs.

EVAPJET Nozzles



- Oscillating spray water
- Thermal performance increase

EVAPJET's unique design ensures that every square inch of heat transfer surface receives complete and even water coverage, resulting in maximum thermal performance.

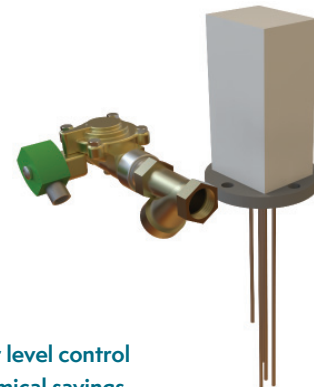
Vibration Switch



- UL listed
- Rated for up to 5G operation.
- Switch can be easily reset in the field.

Protect fan assembly and drive components with EVAPCO'S vibration cut out switch. Early notification of a vibration problem can eliminate future inconvenient and costly repairs.

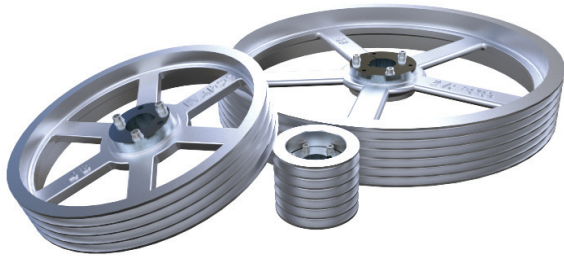
Electronic Water Level Control



- Accurate water level control
- Water and chemical savings

Basin water level is accomplished utilizing a 3 or 5 probe sensor mounted external to the unit in a vertical stand pipe. The 3 probe sensor monitors high and low water levels. 5 probe sensor includes high and low water alarms.

Aluminium Pulley Kits



- Corrosion resistant
- Increase power transfer
- Lightweight designs

EVAPCO aluminium pulleys are available in sizes ranging from 4" to 38" diameter with 2 groove to 6 groove B section configurations. Aluminium pulleys are corrosion resistant and lightweight resulting in reduced bearing and belt stress.

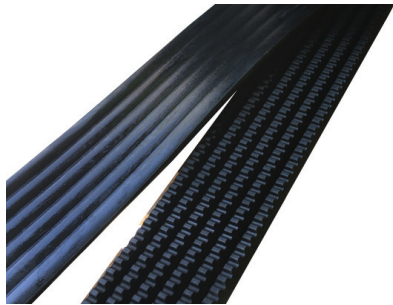
Sprinkler Heads



- Aluminium and nylon materials
- Sizes from 3" to 8" multi arm

Rotating sprinkler heads suitable for use in non-EVAPCO equipment are available in aluminium and nylon from 3" to 8" stand pipe connection and up to 8 spray arm capable.

Banded V Belts



- Solid-back multi-groove belts are constructed of neoprene with polyester cords for long life
- Sized for 150% of motor nameplate power
- Large selection of sizes in stock for immediate shipment.

Don't know what size belt your equipment requires? EVAPCO can size and supply belts for any cooling tower, cooler, or evaporative condenser regardless of manufacturer.

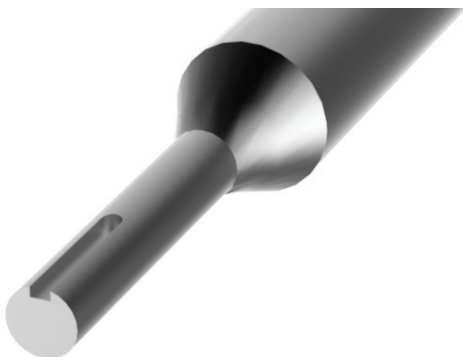
Fan Shaft Bearings



- Heavy duty cooling tower spec
- Metric and imperial sizes available

Heavy duty bearings with rated L-10 life of 75,000 to 135,000 hours! Other manufacturers bearings are typically rated for 40,000 hours. Bearings modified for EVAPCO grease line fitting or direct autogrease canister.

Tubular Fan Shafts



- Available in stainless or mild steel finish
- Shaft tube diameters include 4" | 4.5" | 5"

EVAPCO tubular shafts for centrifugal force draft equipment feature ground and polished steel or stainless steel fan shaft with milled keyways and forged bearing journals.

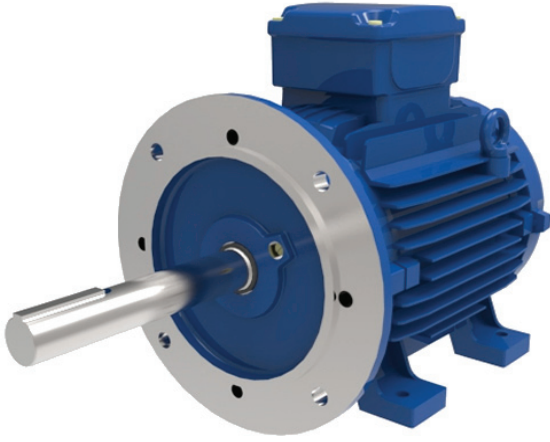
Solid Fan Shafts



- Available in stainless or mild steel finish
- Metric and imperial shaft diameters

EVAPCO solid steel shafts for centrifugal force draft and axial fan equipment feature ground and polished steel or stainless steel fan shaft with milled keyways.

Fan Motors



- Epoxy coated externally
- Sizes from 0.37kW to 45kW

Fan motors are available in 4, 6, 8, 10 and 12 pole configurations. Standard motors feature IP56 dust and water ingress protection, epoxy coating, sealed-for-life bearing and thermistors fitted. Extended drive shaft fan motors are available.

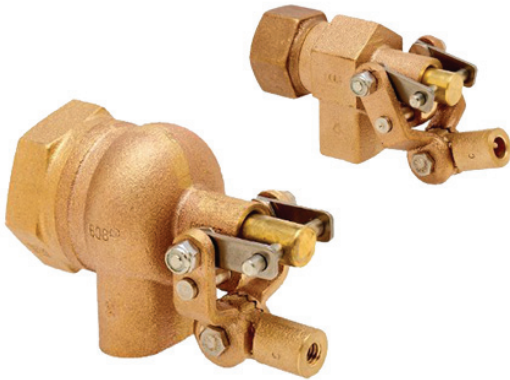
EVAPCO Pumps



- Sizes from 0.5kW to 7.5kW
- Precision machined impellers
- Heavy duty construction

Centrifugal close-coupled pumps feature precision machined pump impellers fitted to extended motor shafts for perfect alignment. Pumps are available in horizontal and vertical mounting configurations with NPT or ANSI flange connections.

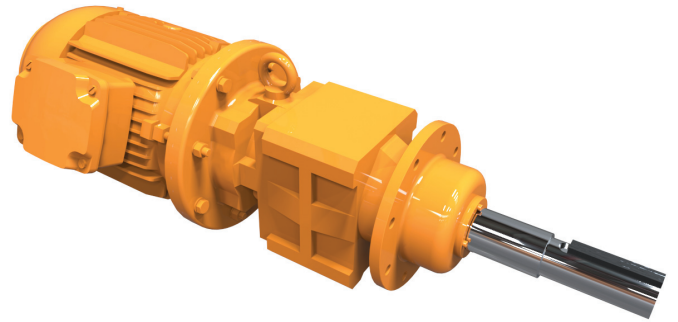
Mechanical Make-Up Valves



- Heavy duty brass construction
- Pancake floats for turbulent basins
- Sizes from 0.5" to 2" diameter

Mechanical make up valves ranging from 0.5" to 2" diameter with BSP and NPT-thread options. Direct replacement kits for EVAPCO, AQUA-COOL and other brands of equipment are available featuring pancake float and precision threaded rod adjustment.

Gear Drives



- Inline and right-angle options
- Conversion kits available
- Low maintenance and strong reliability

Single reduction gear drive designs provide trouble free operation with minimal routine maintenance requirement even in the most severe duty cooling tower applications. Evapco can replace or retrofit right angle drives complete with floating shaft couplings or direct drive options to suit all makes and models of equipment.



Mr. GoodTower®

EVAPCO Australia Pty Ltd - Regional Headquarters Australia & New Zealand

EVAPCO Australia Pty Ltd | 34-42 Melbourne Road, Riverstone NSW 2765 Australia
PHONE: +61 2 9627 3322 | EMAIL: mrgoodtower@evapco.com.au
WEB: mrgoodtower.com.au | ABN: 85 138 737 390

Visit the Mr. GoodTower Website for:

- The latest product brochures and flyers
- Regional service centre contact details
- Educational product videos
- Request a quotation for parts or service work
- Product details and specifications

